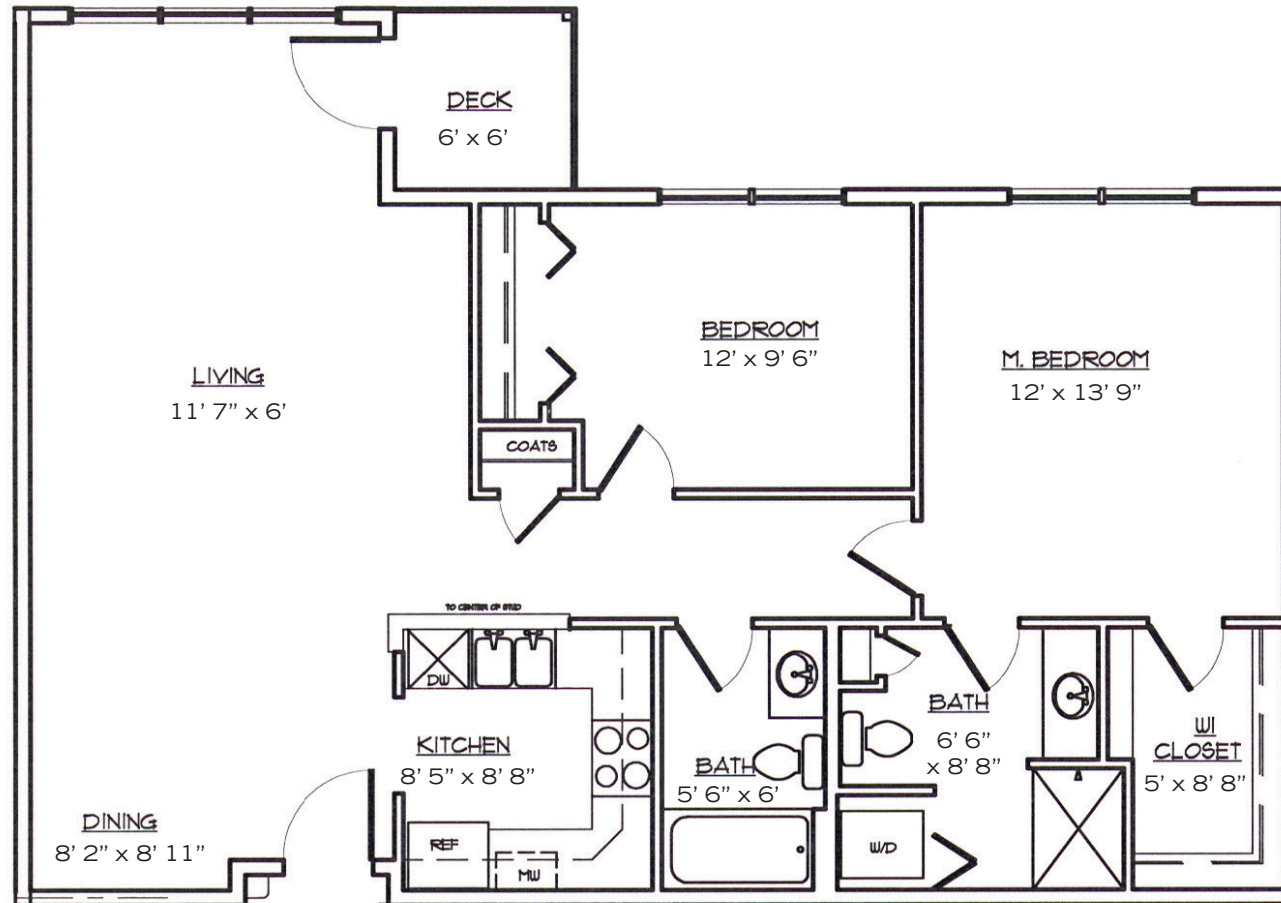


THE LINCOLN APARTMENT



TOTAL GROSS SQUARE FEET: **1055**

DECK SQUARE FEET: **36**

Not to Scale. Floorplan Dimensions are Subject to Change.

SERVICES & INFORMATION

SERVICES INCLUDED WITH APARTMENTS*

- Daily Continental Breakfast (Mon – Sat)
- Chef Prepared, Wait Staff-Served Dinner Nightly in the Maine Lodge (Mon – Sat)
- Sunday Brunch
- Twice Monthly Housekeeping
- Property Taxes
- Heat, Hot Water, & Air Conditioning
- Fire and Extended Coverage Insurance
- Snow Removal
- Trash Removal
- Water & Sewer
- Lawn & Grounds Care
- Scheduled Courtesy Transportation
- Full-time Life Enrichment Coordinator for Planning Social, Recreational, Educational and Cultural Programs
- Wellness and Fitness Programs with Fitness Director
- 24-Hour Emergency Response System
- Maintenance Services
- Garden Beds Tilled Annually

* Telephone, Cable TV, Electricity, and Insurance not included.

COMMUNITY AREAS

- Dining Room and Private Dining Room
- Multipurpose Activities/Media Room
- Granite Room
- Grand Living Room with Fireplace
- Sun Porch
- Indoor Heated Pool and Hot Tub
- Fitness Center
- Beauty Salon & Barber Shop
- Library
- Kennebec Savings Bank
- Ballard Center Community Room
- Computer Center
- Billiards Room
- Landscaped Grounds, Terraces and Walking Paths
- Outdoor Garden Areas
- Gazebo
- Ample Resident and Guest Parking
- Massage Therapist